

November 2023

# London Luton Airport Expansion

Planning Inspectorate Scheme Ref: TR020001

Volume 8 Additional Submissions (Examination)

**8.102 Applicant's Response to Issue Specific Hearing 6  
Action 5: Habitats and species of principal importance  
plan**

Infrastructure Planning (Examination Procedure) Rules 2010

Application Document Ref: TR020001/APP/8.102

**The Planning Act 2008**

**The Infrastructure Planning (Examination Procedure) Rules 2010**

**London Luton Airport Expansion Development Consent Order 202x**

---

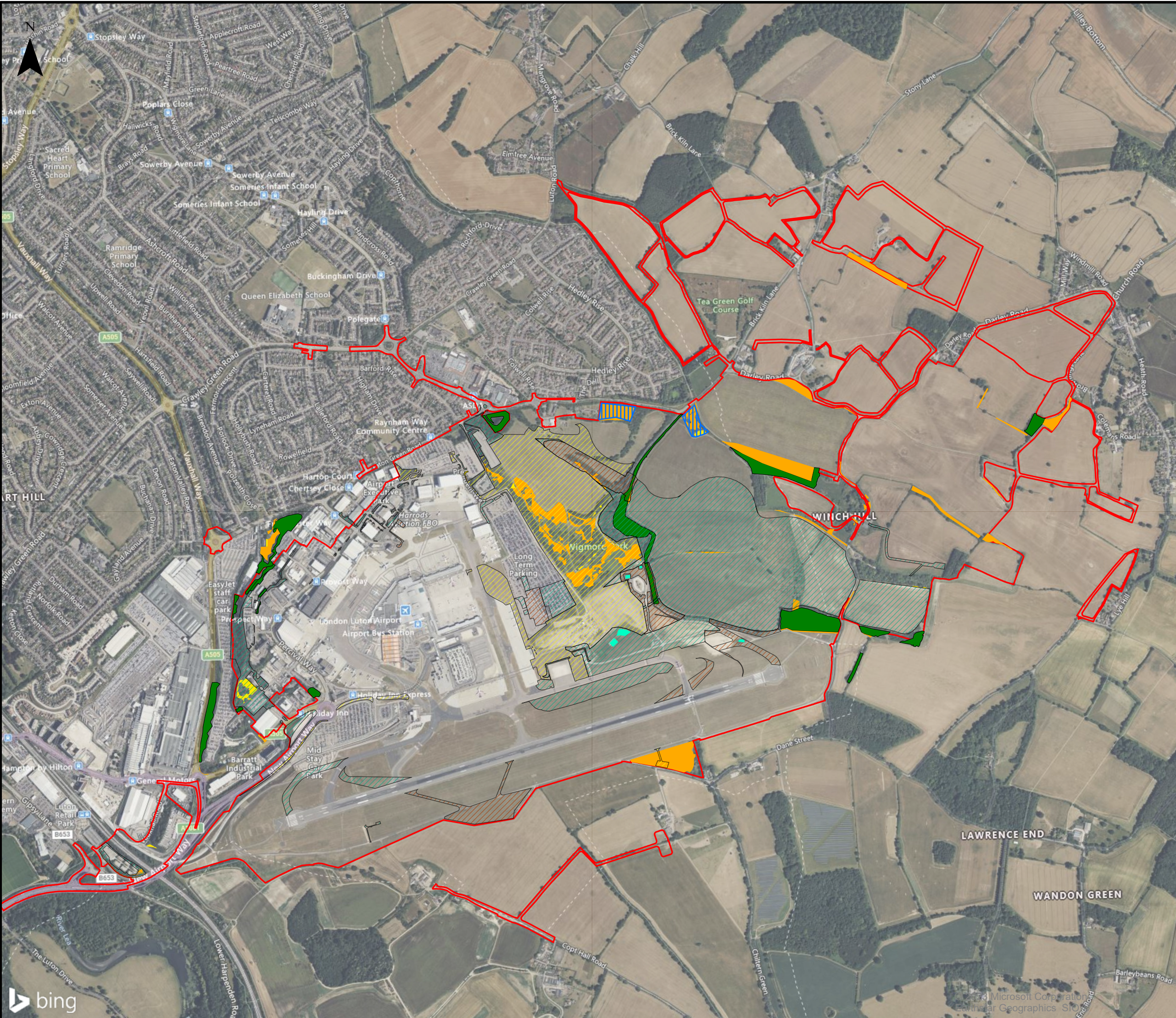
**8.102 APPLICANT'S RESPONSE TO ISSUE SPECIFIC HEARING 6 ACTION 5: HABITATS AND SPECIES OF PRINCIPAL IMPORTANCE PLAN**

---

<b>Deadline:</b>	Deadline 4
<b>Planning Inspectorate Scheme Reference:</b>	TR020001
<b>Document Reference:</b>	TR020001/APP/8.102
<b>Author:</b>	Luton Rising

<b>Version</b>	<b>Date</b>	<b>Status of Version</b>
Issue 1	November 2023	Deadline 4 – Additional Submissions





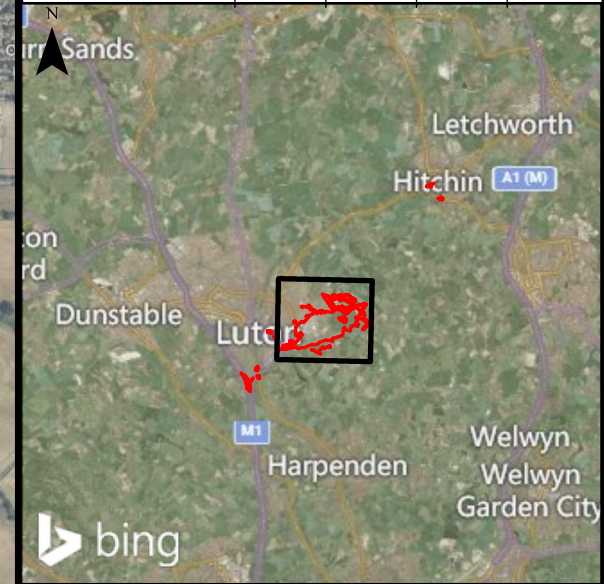
This drawing may contain mapping by permission of Ordnance Survey on behalf of HMSO © Crown Copyright and database rights 2022 Ordnance Survey 0100031673

All structure positions are indicative. The proposed works will be subject to detailed design development. The changes will be within limits of deviation specified in the Development Consent Order.

- Legend**
- Order Limits
  - Habitats of Principal Importance**
  - Hedgerow
  - Lowland mixed deciduous woodland
  - Lowland meadow
  - Lowland calcareous grassland
  - Species of Principal Importance**
  - Low density slow-worm population
  - Low numbers of common toad within these ponds
  - Site clearance boundaries**
  - Assessment Phase 1
  - Assessment Phase 2a
  - Assessment Phase 2b

Note: Bats, birds and invertebrates of principal importance are not shown within this drawing due to the number of records. These are detailed within Appendix 8.1 of the ES – Ecology Baseline Report

Additional Submission Deadline 4	AB	TG	CS	13/10/23	P01
Revision History	Drawn	Checked	Approved	Date	Rev.



**Luton Rising**  
 Our airport. Our community. Our planet.  
 Luton Rising  
 Hart House Business Centre  
 Kimpton Road, Luton, LU2 0LA  
 www.lutonrising.org.uk

**London Luton Airport Expansion  
 Development Consent Order**

Drawing Title  
 Applicant's response to Issue Specific Hearing 6 Action 5:  
 Habitats and Species of Principal Importance

Purpose of issue	Additional Submission Deadline 4	Suitability
Drawn	Checked	Approved
AB	TG	CS
Date	Scale	Size
13/10/23	1:15,000	A3

DCO Application Ref.	APFP Regulation	DCO Document Ref.
TR020001	APFP 5(2)(a)	TR020001/APP/5.03

Drawing Number	Revision
LLADCO-3C-ARP-00-0R-DR-YE-0524	P01

Project - Phase - Originator - Asset/Zone - Sub Asset - Type- Discp. - Number